



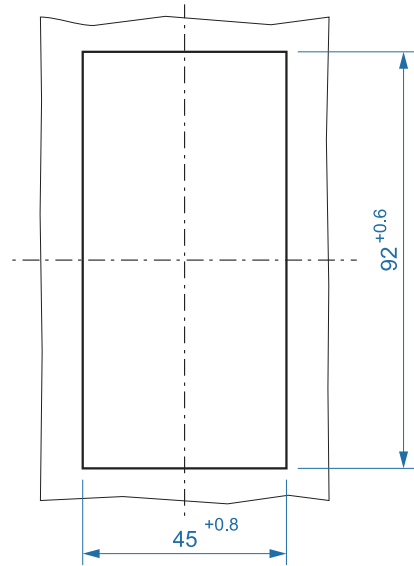
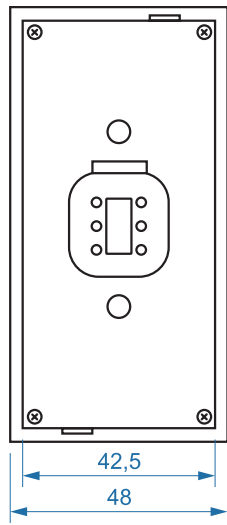
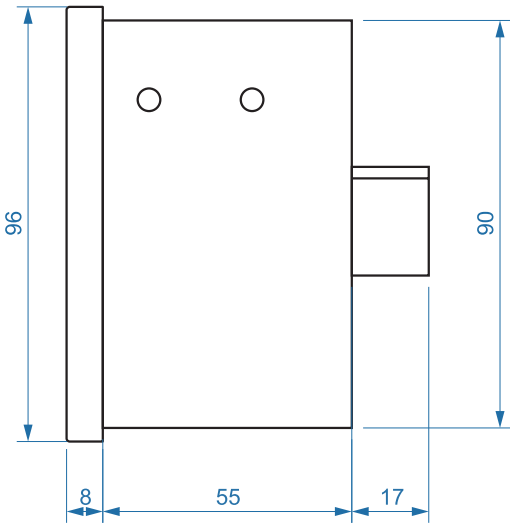
MMX TLG08

180 DEGREE VIEWING ANGLE

9 ULTRA-BRIGHT LEDS

USED WITHIN MMX SYSTEM OR STAND-ALONE

ILLUMINATED FRONT PANEL



MMX Tank Level Gauge

MMX-TLG tank level gauge is designed to display a liquid's volume at an accuracy level of 1/8 of the tank using 9 ultra-bright LEDs. For example, when tank level is below 1/4 the LED at 1/8 is flashing.

The Tank Level Gauge can be used both, as a stand-alone system or as a part of MMX system

connected to IO Node. Several indicators can be connected to show the same value on different locations. The unit uses a 0-600 mbar (0-8.7 PSI) temperature compensated pressure transducer. The transducer measures the column of the liquid in the tank above the opening of the elbow and provides a signal that is proportional the volume.